

Seni Optima products are available in 3 absorbency levels

Incontinence level

Recommended product

For moderate to heavy incontinence

Seni Optima Super
10 pcs, 30 pcs



For heavy to very heavy incontinence

Seni Optima Plus
10 pcs



For very heavy incontinence

Seni Optima Trio
10 pcs

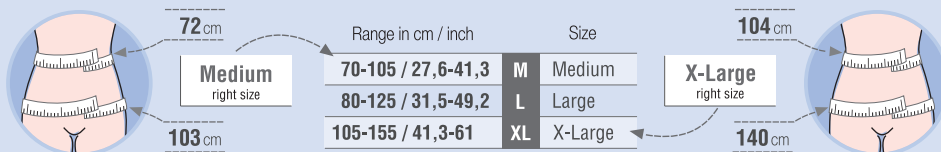


How to choose the right size of the product?

Before buying the product you need to measure waist and hips size with the use of measuring tape. Having them taken refer these values to sizes of Seni Optima products in the table.

If both waist and hips measurements are within one of the ranges given in the table - choose this size.

If measurements of waist and hips are in two different ranges - choose the size of the bigger one.



Choose also skin care products that help to keep skin in good condition

Using skin friendly, breathable absorbent products is only the first step towards healthy skin. It is also crucial to use the right skin care products.



seni
care

Customer Care: 080 2674 2644
WhatsApp +91 725 900 13 20
Email: seni@tzmoin
Website: www.seni-india.com

Manage your incontinence with



SeniControl App



Download on the
App Store

GET IT ON
Google Play

Find us on
YouTube

seni[®]
Giving Dignity

NEW
for India



Seni Optima

Seni Optima absorbent products provide optimal protection in incontinence for people with moderate or high level of urine loss who are active, bedridden or with a limited mobility

Seni Optima absorbent products are an ideal alternative for traditional adult diapers. They guarantee:

- convenience of pull-ups
- absorption of adult diapers

Feel the difference as they are:

EASY TO FIT

Thanks to **adjustable hip band**, which is easy to fix, Seni Optima products can be used also by people with different body types and sizes.

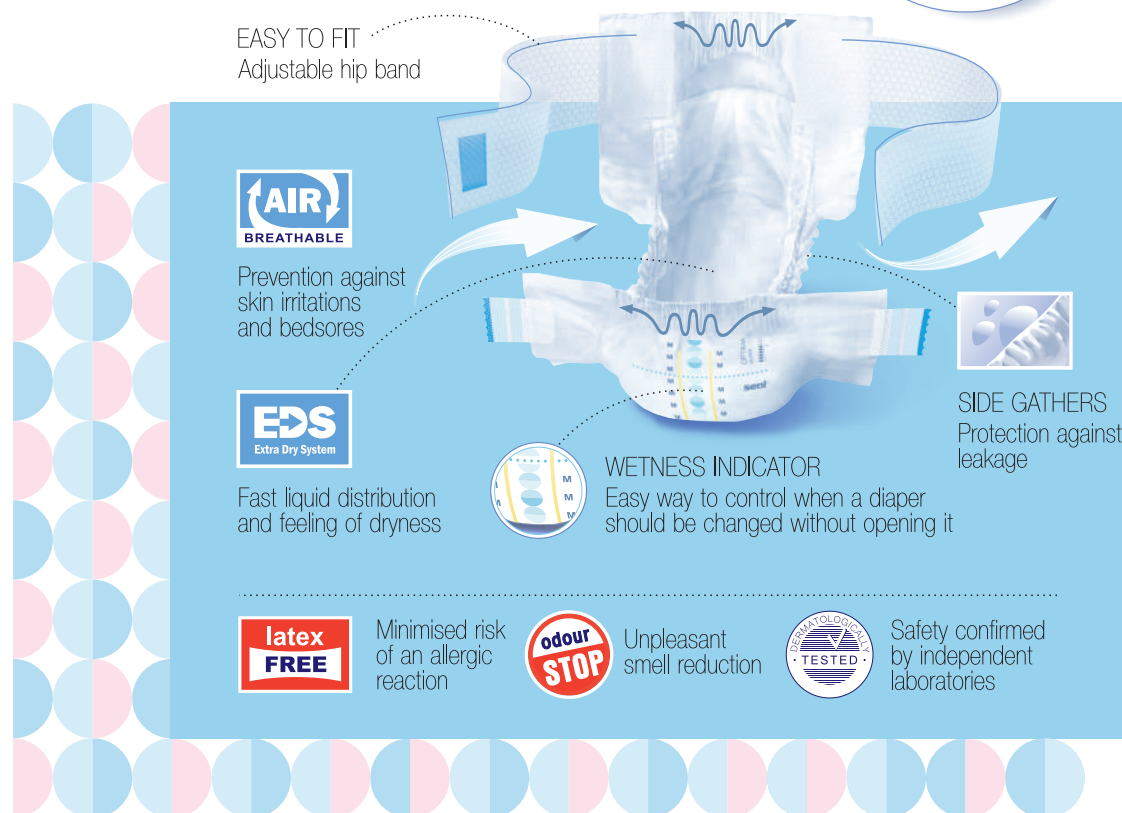
EASY TO PUT ON

Seni Optima diapers are easy to put on, even without a caregiver's help. That supports independence and dignity of people with incontinence.

EASY TO WEAR

Seni Optima products are possible to be easily taken on and off whenever somebody wants to use the toilet. That is a very comfortable solution for people who are incontinent but who still sometimes have a chance to use the toilet and want to do it by themselves.

Discover the features of Seni Optima



See how easy is to put Seni Optima on

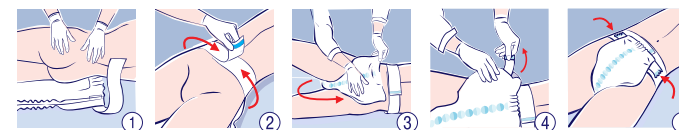
BY OURSELVES



WATCH SENI OPTIMA
USAGE
INSTRUCTION

- ① Fasten the band on the waist and adjust it to feel comfortable.
- ② Pull the absorbent part of Seni Optima through the crotch.
- ③ ④ Attach it to the band with adhesive hook and loop fasteners.
- ⑤ If you need to use the toilet and the product is still dry, just pull the absorbent part back and fasten with attachments to the waistband for a moment, to use the toilet comfortably.

IN BEDRIDDEN, LYING PERSON



- ① Turn the person lying on his/her side and place the product.
- ② Turn the person lying on his/her back and then fasten the band on the waist. Adjust it properly.
- ③ Pull the absorbent part of Seni Optima through the crotch.
- ④ ⑤ Attach it to the band with adhesive hook and loop fasteners.